

# LED Street Light

## Street Light G Series

190lm/w



- Saving **70%** energy compared to high pressure sodium lamp.

30W 190LM/W LED Street Light to replace 100W HPS

70W 190LM/W LED Street Light to replace 250W HPS

- 190lm/W LED street light saves **30%** energy compared to 130lm/W LED street light.

## 5 Years Warranty

## Specification

Power	20W	30W	40W	50W	60W	70W
Input Voltage (V)	100-240VAC					
PF	>0.97					
CRI	70	80	70	80	70	80
Efficacy (lm/W)±5%	190	185	190	185	190	185
Lumen Output ± 5%	3800	3700	5700	5550	7600	7400
CCT(K)	3000K/3500K/4000K/4500K/5000K5700K/6000K					
Dimming	Non-Dimming/ 0-10V Dimming					
Intelligent Control	Photocell/DALI Control					
Beam Angle	Type II / Type III / Type IV					
Material	Die-Cast + PC					
Operating Temperature	-40°C~45°C					
Humidity	10%~90%					
Installation	POLE- φ 60mm					
LED Type	5050					
Power Supply	SOSEN					
Surge Protection	10KV					
Certification	CE/ROHS/LM79/TM-21					
IP Rating	IP 66					
Warranty	5 Years					

## Packing

Model	Power	Size (mm)	Carton Size (mm)	G.W±0.2KG
SA-STA00-20Y-XX-G	20W	L455*W160*H107	L500*W165*H130	1.7
SA-STA00-30Y-XX-G	30W	L455*W160*H107	L500*W165*H130	1.7
SA-STA00-40Y-XX-G	40W	L455*W160*H107	L500*W165*H130	1.8
SA-STA00-50Y-XX-G	50W	L455*W160*H107	L500*W165*H130	1.8
SA-STA00-60Y-XX-G	60W	L455*W160*H107	L500*W165*H130	1.8
SA-STA00-70Y-XX-G	70W	L535*W200*H113	L540*W205*H130	2.6

## Description:

Model name description: SA-STA00-100Y-XX-G

"SA" indicates the name of company producing the product;

"ST" indicates the product is a LED Street Light;

"A00" indicates the voltage of the product;

"100" indicates the power of the product, it can be 20、30、40、50、60、70、80、90、100、120、150、200W;

"Y" indicates the colour temperature of the product. "Y" can be N=3000K,M=3500K,L=4000K,K=4500K,C=5000K,H=5700K,W=6000K; represent colour temperature;

Where "XX" represent light angle, it can be TI, TII, TIII, TIV, TV;

"G" indicates the shape size.

## Specification

Power	80W	90W	100W	120W	150W	200W
Input Voltage (V)	100-240VAC					
PF	>0.97					
CRI	70	80	70	80	70	80
Efficacy (lm/W)±5%	190	185	190	185	190	185
Lumen Output ± 5%	15200	14800	17100	16650	19000	18500
CCT(K)	3000K/3500K/4000K/4500K/5000K/5700K/6000K					
Dimming	Non-Dimming/ 0-10V Dimming					
Intelligent Control	Photocell/DALI Control					
Beam Angle	Type II / Type III / Type IV					
Material	Die-Cast + PC					
Operating Temperature	-40°C~45°C					
Humidity	10%~90%					
Installation	POLE- φ 60mm					
LED Type	5050					
Power Supply	SOSEN					
Surge Protection	10KV					
Certification	CE/ROHS/LM79/TM-21					
IP Rating	IP 66					
Warranty	5 Years					

## Packing

Model	Power	Size (mm)	Carton Size (mm)	G.W±0.2KG
SA-STA00-80Y-XX-G	80W	L535*W200*H113	L540*W205*H130	2.6
SA-STA00-90Y-XX-G	90W	L535*W200*H113	L540*W205*H130	2.6
SA-STA00-100Y-XX-G	100W	L535*W200*H113	L540*W205*H130	2.6
SA-STA00-120Y-XX-G	120W	L535*W200*H113	L540*W205*H130	2.9
SA-STA00-150Y-XX-G	150W	L654*W266*H113	L685*W310*H150	3.7
SA-STA00-200Y-XX-G	200W	L654*W266*H113	L685*W310*H150	3.9

## Description:

Model name description: SA-STA00-100Y-XX-G

"SA" indicates the name of company producing the product;

"ST" indicates the product is a LED Street Light;

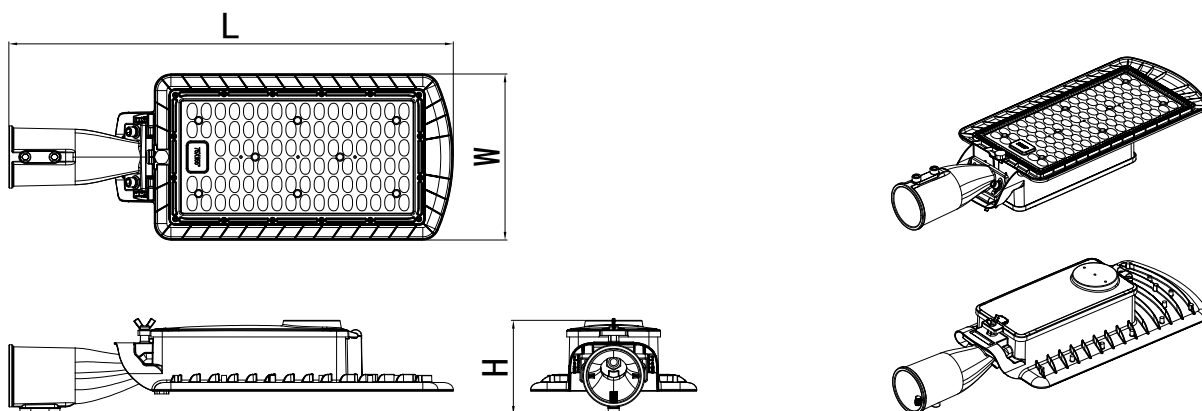
"A00" indicates the voltage of the product;

"100" indicates the power of the product, it can be 20、30、40、50、60、70、80、90、100、120、150、200W;

"Y" indicates the colour temperature of the product. "Y" can be N=3000K, M=3500K, L=4000K, K=4500K, C=5000K, H=5700K, W=6000K; represent colour temperature;

Where "XX" represent light angle, it can be TI, TII, TIII, TIV, TV;

## Dimensions



Model	SA-STA00 -20Y-XX-G	SA-STA00 -30Y-XX-G	SA-STA00 -40Y-XX-G	SA-STA00 -50Y-XX-G	SA-STA00 -60Y-XX-G	SA-STA00 -70Y-XX-G	SA-STA00 -80Y-XX-G	SA-STA00 -90Y-XX-G	SA-STA00 -100Y-XX-G	SA-STA00 -120Y-XX-G	SA-STA00 -150Y-XX-G	SA-STA00 -200Y-XX-G
Watt(W)	20	30	40	50	60	70	80	90	100	120	150	200
Length(mm)	455					535					654	
Width(mm)	160					200					266	
Height(mm)	107					113					113	

## Structure Performance

Housing	Die-Cast
Cover	PC
Cable Length	400mm
IP Rating	IP 66
IK Rating	IK 10

### Smart Structure Free-tool Maintenance

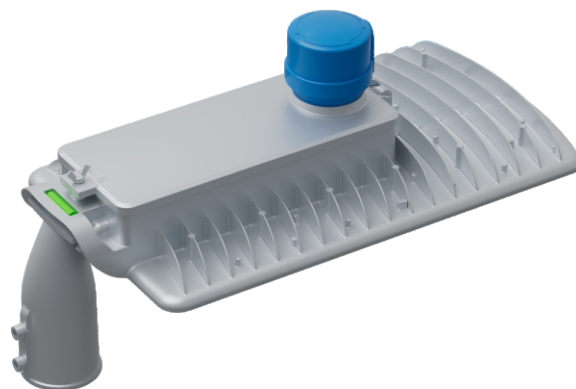
It is separated by two parts. There is a screw at the roof cover, loose it and unlock the driver

With this smart structure, only one person can finish it without any tools in one minute to maintain.



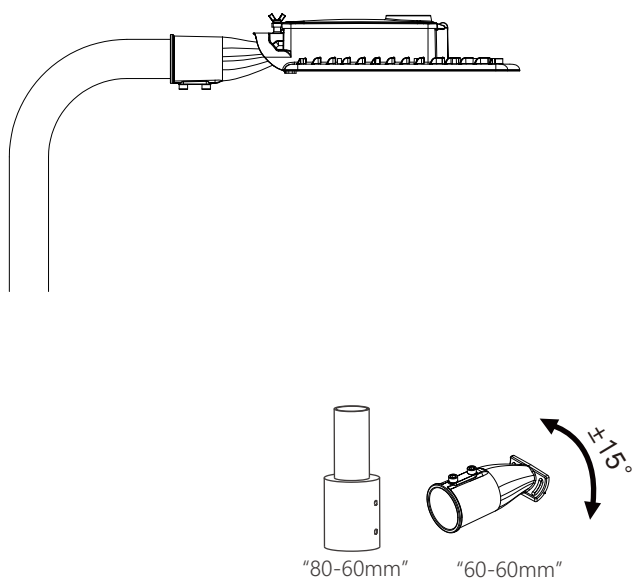
### Level

The lamp carries the level meter balance function, the installment is convenient and quick.

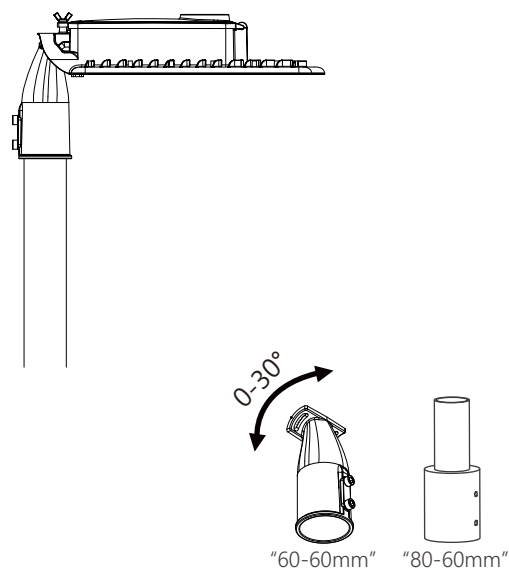


## Installation mode

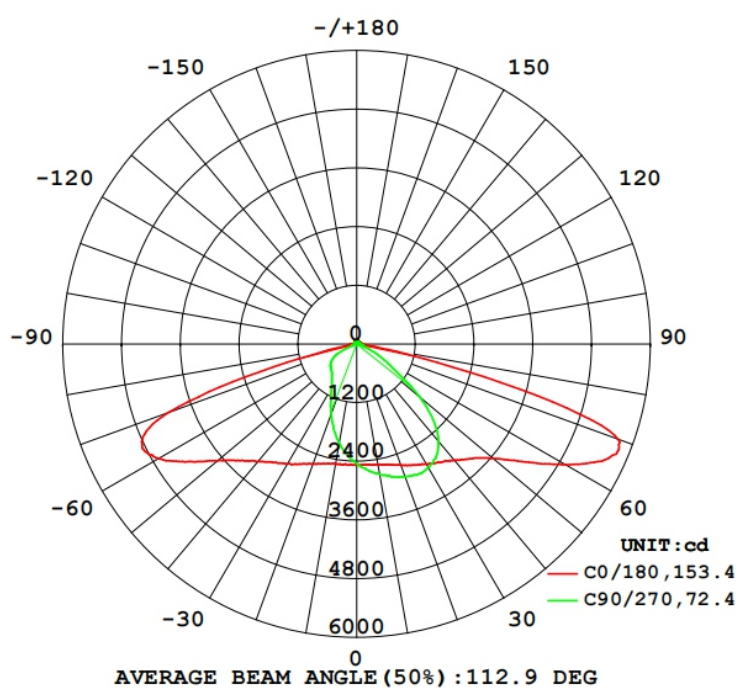
Horizontal installation  
Adjustable angle  $\pm 15^\circ$



Vertical installation  
Adjustable angle  $0^\circ \sim +30^\circ$



## Beam angle



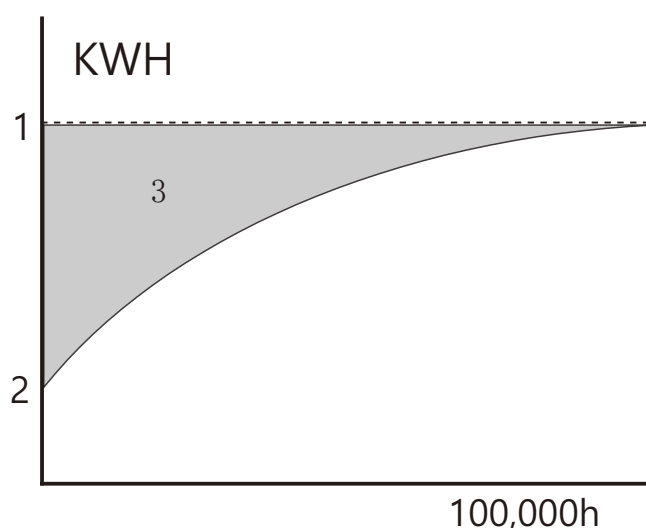


### Constant Light Output (CLO)

This system compensates for the depreciation of luminous flux to avoid excess lighting at the beginning of the installation's service life. Luminous depreciation over time must be taken into account to ensure a predefined lighting level during the luminaire's useful life.

Without a CLO feature, this simply means increasing the initial power upon installation in order to make up for luminous depreciation. By precisely controlling the luminous flux, the energy needed to reach the required level can be maintained throughout the luminaire's life.

throughout the luminaire's life.

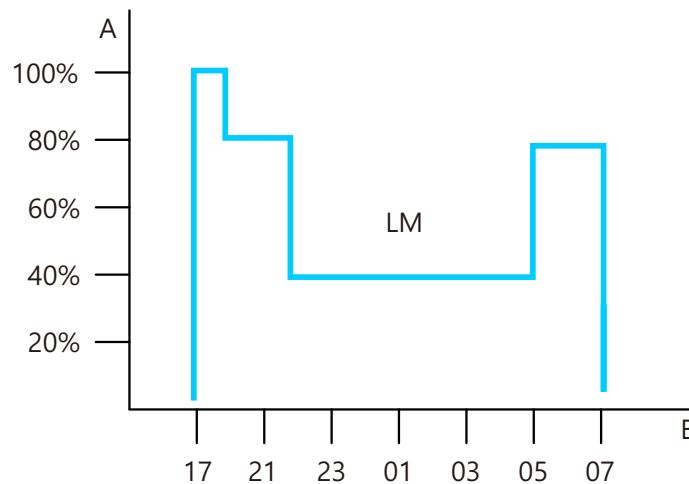


1. Standard lighting level
2. LED lighting consumption with CLO
3. Energy savings

### Custom dimming profile

Intelligent luminaire drivers can be programmed with complex dimming profiles. Up to five combinations of time intervals and light levels are possible. This feature does not require any extra wiring.

The period between switching on and switching off is used to activate the preset dimming profile. The customised dimming system generates maximum energy savings while respecting the required lighting levels and uniformity throughout the night.



A. Dimming level | B. Time

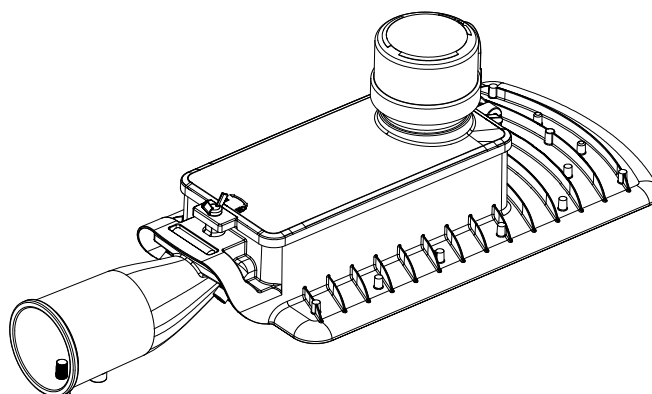
### PIR sensor: motion detection

In places with little nocturnal activity, lighting can be dimmed to a minimum most of the time. By using passive infrared (PIR) sensors, the level of light can be raised as soon as a pedestrian or a slow vehicle is detected in the area.

Each luminaire level can be configured individually with several parameters such as minimum and maximum light output, delay period and ON/OFF duration time. PIR sensors can be used in an autonomous or interoperable network.







## Day-Night Automatic Street Light with Photocontrol

- Turn-On Light Level: 16 Lux or at customer's request
- Turn-Off Light Level: 24 Lux or at customer's request



## Smart City Road Lighting Lora/Zigbee Control System

- Measuring Current, Voltage, Power; Power Consumption detection function;
- One way switch and 0~10V dimming signal output;
- Monitor the working status of lamps and lanterns, anomaly outputs alarm;
- Single lamp custom group control;
- Local timing, latitude and longitude control functions;
- Over-current protection, lamps condition detection and default lighting functions;
- Overload protection design for ensuring security;